



***Holmesfield  
Parish Council  
Newsletter  
No.548 – February 2024***

*From Moorwood Lane*



## PARISH COUNCILLORS

<b>Barry Wheat</b> 0114 289 0018	(Chairman), Planning, Newsletter, and Holmesfield Amenity Trust.
<b>Phil Reaney</b> 0114 289 1167	(Vice-Chairman), Road Safety, Footpaths & Bridleways, Henry Fanshawe Foundation.
<b>Carol Huckerby</b> 0114 289 0468	NEDDC Liaison, Penny Acres School, Holmesfield Relief in Need, Holmesfield Education Foundation Charities.
<b>Dr. Mark Blagden</b> 0114 289 0243	Transport and Village Hall .
<b>Bernard Hoare</b> 0114 289 0491	Village Society and Playground.
<b>Shirley Reaney</b> 0114 289 1167	Peak Park, Dronfield Relief in Need Charity.
<b>Wynford Rosser</b> 0114 289 0417	Environment Issues.
<b>Thomas Marples</b> 0114 289 0833	Football Field, Neighbourhood Watch and Police Liaison
<b>Holly Stuart-Bamford</b> 07710 485615	
<b>Liz Boswell</b> 07758 460757	(Clerk) 8 Main Street, Blackfordby, Swadlincote. DE11 8AD <a href="mailto:holmesfieldparishcouncil@hotmail.co.uk">holmesfieldparishcouncil@hotmail.co.uk</a>

---

### Village Hall Letting Officer & Caretaker:

Lucy Perry : 07752 478866

[holmesfieldvillagehall@outlook.com](mailto:holmesfieldvillagehall@outlook.com)

---

<b>Tree Warden:</b>	Nick Deniff	0114 2899359
<b>Newsletter Editor:</b>	Nick Wheat <a href="mailto:nbw159@gmail.com">nbw159@gmail.com</a>	07811 446450
<b>Newsletter Distribution:</b>	Barry Wheat	0114 2890018
<b>District Councillor:</b>	Pam Jones <a href="mailto:pam.jones@ne-derbyshire.gov.uk">pam.jones@ne-derbyshire.gov.uk</a>	01246 231111
<b>County Councillor:</b>	Angelique Foster	07970 741781
<b>Member of Parliament:</b>	Lee Rowley	020 7219 4197
<b>Police:</b>	Non-emergency	101
<b>Crimestoppers:</b>	<a href="http://www.crimestoppers-uk.org">www.crimestoppers-uk.org</a>	0800 555111



## **HOLMESFIELD VILLAGE HALL HIRING RATES**

Main Hall :	£16.00 per Hour
Small Hall :	£11.00 per Hour
Committee Room :	£10.00 per Hour
Kitchen :	£7.00 per Hour

**NOTICE:** *The above Holmesfield Village Hall hire rates are from 1 April 2023*

A refundable bond of £20.00 is required at the time of booking to cover any breakages and damage. Parties running later than 9pm will be charged an additional £40.00 to cover clean up time. Residents living in the Parish of Holmesfield will receive a 10% discount for Private Functions.

Licensable activities such as music, dancing and particularly the sale of alcohol may require a *Temporary Event Notice* which must be applied for at the licensing section of North East Derbyshire District Council prior to the booking.

For more information and bookings please contact the Hall Letting Officer,  
Lucy Perry: 07752 478866  
Email: holmesfieldvillagehall@outlook.com

---

## **INFORMATION ON LOCAL SERVICES**

**Derbyshire County Council:** County Hall, Matlock. DE4 3AG

Tel: 01629 580000 – Call Derbyshire: 0845 6058058

Monday – Friday 8.00am – 8.00pm, Saturday 9.30am – 4.00pm

Education, Libraries, Rights of Way, Social Services,

Gritting, Street Lighting, Pot Holes, Trading Standards.

**North East Derbyshire District Council**

2013 Mill Lane, Wingerworth, Chesterfield. S42 6NG. Tel: 01246 231111

Bulk Waste, Council Tax, Dog Wardens, Energy Advice,

Environmental Health, Fly Tipping, Housing, Event Licensing,

Pest Control, Planning, Recycling and Refuse, Street Cleaning

**Holmesfield Parish Council:** Tel: 07758 460757

Bus Shelters, Dog Bins, Playground, Village Hall, Grit Bins.

---

## **CONTACTING DERBYSHIRE POLICE ONLINE**

A team of helpful call handlers are here for the people of Derbyshire 24 hours a day, 7 days a week. The links you can use to get in touch digitally are:

Facebook: message [www.facebook.com/derbyshireconstabulary](https://www.facebook.com/derbyshireconstabulary)

Twitter: direct message [www.twitter.com/derpolcontact](https://www.twitter.com/derpolcontact)

Website: online forms and Live Chat by visiting [www.derbyshire.police.uk](https://www.derbyshire.police.uk)



# *Cowley Riding School*

*Holmesfield • Dronfield • 0114 2890356*



Association of British Riding Schools Approved  
Lessons for adults & children 7yrs & over • 13st/83kg weight limit applies  
Group lessons or Private lessons  
All abilities catered for from complete beginners to advanced  
Pony days – Thursdays in school holidays, all grades  
Established 1973

**Regular garden maintenance**  
**Hedge cutting**  
**Tree surgery**  
**Garden tidies**

📞 0114 258 9290  
✉ james@jabird.co.uk  
🌐 www.jabird.co.uk

1-5 Buttermere Road  
Sheffield S7 2AX

**JA  
BIRD  
LAND  
SCAPES** LTD



# **HOLMESFIELD VILLAGE HALL: CLASSES & EVENTS FOR ALL**

*Holmesfield Village Hall is a friendly, clean and spacious community venue with ample private parking available to hire for your events & celebrations.*

*Email enquiries to: [holmesfieldvillagehall@outlook.com](mailto:holmesfieldvillagehall@outlook.com)*

***Here is a taste of our regular programme:***

## ***Mondays***

**Art Class :** Develop your creative talents. Adult art class / painting class suitable for all.  
Contact Glen: 07710 600453. 10.00am start.

**Chair Based Exercise :** Live Longer Live Stronger Age UK. Contact Kerry: 07856 725582. 1.30pm start.

**Rhythmic Dance :** Inspire confidence, dance technique and performance skills. Dance and gymnastics classes for all children from pre-school to teens. Contact Jess and Hayley: 07725 908390. 4.00pm start.

**Zumba :** Latin Inspired dance/fitness class. If you love to dance, enjoy moving to great music and want to keep fit then this class is for you - feel good fitness. Adult class suitable for all suitable for all.  
Contact Lucy: 0775 2478866 Email: [zumba.dronfield@hotmail.co.uk](mailto:zumba.dronfield@hotmail.co.uk). 7.00pm start.

**Neighbourhood Watch :** Local neighbourhood watch group meets the first Monday of the month, local residents welcome. Contact Sally: 07930 430044. 8.00pm start.

## ***Tuesdays***

**Rhythmic Dance :** Inspire confidence, dance technique and performance skills. Dance and gymnastics classes for all children from pre-school to teens. Contact Jess & Hayley: 07725 908390. 4.00pm start.

## ***Wednesdays***

**Kilners Cakes :** Creative cake decorating workshops, running on regular Wednesday evenings.  
Contact Andrea for details of the next workshop: 07961 454943.

**Holmesfield Gardening Association :** If you are a keen gardener and looking to join a club come along to our next meeting on the first Wednesday of the month.  
Contact Hilary: 07748 846257. 7.30pm start.

**Holmesfield Flower Arranging Club :** New to flower arranging or keen to develop existing skills? Come along to our demonstrations and club workshops every third Wednesday of the month.  
Contact Diane: 07718 925514. 7.00pm start.

## ***Thursdays***

**Rhythmic Dance :** Inspire confidence, dance technique and performance skills. Dance and gymnastics classes for all children from pre-school to teens. Contact Jess & Hayley: 07725 908390. 4.00pm start.

**Keep Fit :** Aerobics and body conditioning exercises suitable for all.  
Contact Geraldine: 07594 684676. 7.30pm start.

## ***Fridays***

**NEW! Drama Kids :** Due to start in the coming months. Contact: [sheffield@dramakids.co.uk](mailto:sheffield@dramakids.co.uk).

## ***Saturdays***

**Kilner's Cakes :** Creative cake decorating workshops, running on regular Saturday afternoons.  
Contact Andrea for details of the next workshop: 07961 454943.

**Holmesfield Local Market :** A local farmers, producers and artisan market running periodically on Saturdays throughout the year. Over 30 exhibitors selling a wide variety of locally produced food, drink, art and crafts.  
The next market will be on Saturday 20th April 2024. See Holmesfield Local Market Facebook page.

**Party Hire :** Contact Lucy Perry on 0775 2478866 to book your children's party or family celebration. Regular Saturdays and Sundays available for hire throughout the year. Plenty of space at the Village Hall for Bouncy Castles! Featuring a well equipped kitchen. Remember there is a discount on hire for local residents. Email for availability: [holmesfieldvillagehall@outlook.com](mailto:holmesfieldvillagehall@outlook.com)



# SAXTON BALUSTRADES

OPEN UP YOUR HOME & GARDEN  
WITH SAXTON GLASS & STAINLESS STEEL BALUSTRADES



# TUFF ROOFING

THE LEADERS IN SEAMLESS FLAT ROOFING & BALUSTRADES



OUR SYSTEMS HAVE A MINIMUM  
20-YEAR GUARANTEE

**SEAMLESS FIBREGLASS FLAT ROOFING**  
**TUFF-ROOFING** offers the best possible protection available for your flat roof

Call for a no-obligation quotation. More photos available on our website:  
**TEL: 0114 2899286 [www.tuff-roofing.co.uk](http://www.tuff-roofing.co.uk)**

UNIT 3, DRONFIELD COURT, WARDS YARD,  
DRONFIELD, DERBYSHIRE S18 1NQ

# VILLAGE HALL CALENDAR : FEBRUARY 2024

548

1st February (Thurs.)	Rhythmic Dance Workshop – dance classes for children <a href="http://www.rhythmicdancestudio.com">www.rhythmicdancestudio.com</a> Holmesfield Keep Fit (suitable for all) - contact Geraldine : 07594 684676	Main Hall Main Hall	10.00am - 11.30am & 4.00pm - 8.00pm 7.30pm - 8.30pm
2nd February (Fri.)	Private Booking Drama Kids (a new class). After school drama club, classes available for ages 5 to 17 - contact: 07393 201229	Main Hall	- 5.30pm - 6.30pm
3rd February (Sat.)	Private Booking	Main Hall	-
5th February (Mon.)	Glen Wright Art Class (suitable for all) - contact: 07710 600453	Main Hall	10.00am - 12.00pm
	Live Longer Live Stronger Age UK Chair Based Exercise - contact Kerry: 07923 672165	Main Hall	2.00pm - 3.00pm
	Rhythmic Dance classes for children <a href="http://www.rhythmicdancestudio.com">www.rhythmicdancestudio.com</a> Zumba – Latin Inspired Dance/Fitness Class suitable for all - contact: Lucy: 0775 2478866	Main Hall Main Hall	4.00pm - 6.30pm 7.00pm - 8.00pm
6th February (Tues.)	Holmesfield Neighbourhood Watch Meeting - contact Sally : 07930 430044	Committee Room	8.00pm - 9.00pm
	Private Hire	Main Hall	-
	Penny Acres School Rhythmic Dance Workshop – dance classes for children <a href="http://www.rhythmicdancestudio.com">www.rhythmicdancestudio.com</a>	Main Hall Main Hall	1.30pm - 3.30pm 4.00pm - 8.30pm
7th February (Wed.)	Holmesfield Gardening Association - contact Hilary : 07748 846257	Main Hall	7.30pm - 9.30pm
8th February (Thurs.)	Rhythmic Dance Workshop – dance classes for children <a href="http://www.rhythmicdancestudio.com">www.rhythmicdancestudio.com</a>	Main Hall	10.00am - 11.30am & 4.00pm - 8.00pm
	Holmesfield Keep Fit (suitable for all) - contact Geraldine : 07594 684676	Main Hall	7.30pm - 8.30pm
9th February (Fri.)	Private Booking Drama Kids (a new class). After school drama club, classes available for ages 5 to 17 - contact: 07393 201229	Main Hall	- 5.30pm - 6.30pm
10th February (Sat.)	Private Booking	Main Hall	-
11th February (Sun.)	Private Booking	Small Hall	-
	Private Booking	Main Hall	-
12th February (Mon.)	Glen Wright Art Class (suitable for all) - contact: 07710 600453	Main Hall	10.00am - 12.00pm
	Live Longer Live Stronger Age UK Chair Based Exercise - contact Kerry: 07923 672165	Main Hall	2.00pm - 3.00pm
	Rhythmic Dance classes for children <a href="http://www.rhythmicdancestudio.com">www.rhythmicdancestudio.com</a> Zumba – Latin Inspired Dance/Fitness Class suitable for all - contact: Lucy: 0775 2478866	Main Hall Main Hall	4.00pm - 6.30pm 7.00pm - 8.00pm
13th February (Tues.)	Private Booking	Main Hall	-
	Penny Acres School Rhythmic Dance Workshop – dance classes for children <a href="http://www.rhythmicdancestudio.com">www.rhythmicdancestudio.com</a>	Main Hall	1.30pm - 3.30pm 4.00pm - 8.30pm
14th February (Wed.)	Holmesfield Parish Council Meeting	Committee Room	From 7.30pm
15th February (Thurs.)	Rhythmic Dance Workshop – dance classes for children <a href="http://www.rhythmicdancestudio.com">www.rhythmicdancestudio.com</a>	Main Hall	10.00am - 11.30am & 4.00pm - 8.00pm
	Holmesfield Keep Fit (suitable for all) - contact Geraldine : 07594 684676	Main Hall	7.30pm - 8.30pm
16th February (Fri.)	Private Booking	Main Hall	-
	Drama Kids (a new class). After school drama club, classes available for ages 5 to 17 - contact: 07393 201229	Main Hall	5.30pm - 6.30pm
19th February (Mon.)	Glen Wright Art Class (suitable for all) - contact: 07710 600453	Main Hall	10.00am - 12.00pm
	Live Longer Live Stronger Age UK Chair Based Exercise - contact Kerry: 07923 672165	Main Hall	2.00pm - 3.00pm
	Rhythmic Dance classes for children <a href="http://www.rhythmicdancestudio.com">www.rhythmicdancestudio.com</a> Zumba – Latin Inspired Dance/Fitness Class suitable for all - contact: Lucy: 0775 2478866	Main Hall Main Hall	4.00pm - 6.30pm 7.00pm - 8.00pm
20th February (Tues.)	Private Booking	Main Hall	-
	Penny Acres School Rhythmic Dance Workshop – dance classes for children <a href="http://www.rhythmicdancestudio.com">www.rhythmicdancestudio.com</a>	Main Hall	1.30pm - 3.30pm 4.00pm - 8.30pm
22nd February (Thurs.)	Rhythmic Dance Workshop – dance classes for children <a href="http://www.rhythmicdancestudio.com">www.rhythmicdancestudio.com</a>	Main Hall	10.00am - 11.30am & 4.00pm - 8.00pm
	Holmesfield Keep Fit (suitable for all) - contact Geraldine : 07594 684676	Main Hall	7.30pm - 8.30pm
23rd February (Fri.)	Private Booking	Main Hall	-
	Drama Kids (a new class). After school drama club, classes available for ages 5 to 17 - contact: 07393 201229	Main Hall	5.30pm - 6.30pm
25th February (Sun.)	Private Booking	Main Hall	-
26th February (Mon.)	Glen Wright Art Class (suitable for all) - contact: 07710 600453	Main Hall	10.00am - 12.00pm
	Live Longer Live Stronger Age UK Chair Based Exercise - contact Kerry: 07923 672165	Main Hall	2.00pm - 3.00pm
	Rhythmic Dance classes for children <a href="http://www.rhythmicdancestudio.com">www.rhythmicdancestudio.com</a> Zumba – Latin Inspired Dance/Fitness Class suitable for all - contact: Lucy: 0775 2478866	Main Hall Main Hall	4.00pm - 6.30pm 7.00pm - 8.00pm
27th February (Tues.)	Private Booking	Main Hall	-
	Penny Acres School Rhythmic Dance Workshop – dance classes for children <a href="http://www.rhythmicdancestudio.com">www.rhythmicdancestudio.com</a>	Main Hall	1.30pm - 3.30pm 4.00pm - 8.30pm
29th February (Thurs.)	Rhythmic Dance Workshop – dance classes for children <a href="http://www.rhythmicdancestudio.com">www.rhythmicdancestudio.com</a> Holmesfield Keep Fit (suitable for all) - contact Geraldine : 07594 684676	Main Hall Main Hall	10.00am - 11.30am & 4.00pm - 8.00pm 7.30pm - 8.30pm



# Timber Window and Door Manufacturers

Since 1908

## WINDOWS

- High performance timber
- Stormproof and traditional flush casement
- Spring balance sliding sash
- Traditional box sliding sash with cord and pulley
- Bespoke
- Pre-glazed

## DOORS

- Panel, bespoke, bifold and pre-hung doors
- Frame ledge and brace



BWF Product Design of the Year Award

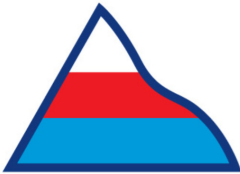


**TOM PEARSON & SONS**  
LTD

Holmesfield Sawmill,  
18 Main Road, Holmesfield,  
Dronfield S18 7WT

T : 0114 289 9384

E : [pearson@holmesfieldsawmill.co.uk](mailto:pearson@holmesfieldsawmill.co.uk)



# Peak Oil

.co.uk

**Your local family supplier of:**

Top quality domestic Heating Oil, Aga Oil,  
Farm Fuels and Renewable Diesel

**Chesterfield:** 01246 450242

**Belper:** 01773 550400

**E:** [sales@peakoil.co.uk](mailto:sales@peakoil.co.uk)



## **PLANNING MATTERS**

### **Applications Received from North East Derbyshire District Council:**

**23/01028/LDC** : Mr Robert Hadfield – Brindwood House, Millthorpe Lane, Holmesfield – Application for Lawful Development Certificate for a Proposed Garage. **COMMENT**

*To suggest to NEDDC that no further applications should be considered for this site until the enforcement notices have been fully complied with.*

### **Determinations Made by North East Derbyshire District Council:**

**NP/NED/0721/0847** : Toll Bar Cottage, Owlbar – Listed Building consent – To remove the windows from the original part of the house and replace. **GRANTED**

### **Other Planning Matters: Enforcement**

North East Derbyshire District Council Tree Preservation Order No. TPO 297/2023 - Tree located at Church Farm, Main Road, Holmesfield, Dronfield.

---

## **PLAY GROUND – PUBLIC SPACE PROTECTION ORDER**

Signs have been put on each entrance to the Play Ground reminding dog owners that North East Derbyshire District Council have put *Public Space Protection Orders* on all play areas within the district.

**This prohibits the entry of dogs to the Play Ground. Please adhere to this for the well-being and safety of children using this facility.**

---

## **PARISH COUNCIL MEETING**

The next meeting of the Parish Council will take place at 7.30pm on **Wednesday 14th February** at Holmesfield Village Hall on Vicarage Close.

---

## **HOLMESFIELD NEIGHBOURHOOD WATCH**

A Neighbourhood Watch meeting will be held on **Monday 5th February**, 8pm to 9pm in Holmesfield Village Hall.

Everyone welcome!

Please contact Sally Marples-Shaw if you have any questions:

Tel: 07930 430044 – Email: sallyannms@icloud.com

---

## **POLICE REPORT**

The written police report included one incident of criminal damage.



OUTRAM FIELDS  
CINNAMON LUXURY CARE

OPENING  
FEBRUARY  
2024



# SHOW SUITE NOW OPEN

We are pleased to announce that our show suite is now open. Outram Fields is a brand-new luxury care home that brings first-class care and superior amenities to the community of Bradway. Outram Fields is part of the Cinnamon Care Collection Group, which is proud to be recognised as one of the Top 20 Large Care Home Groups in the UK for the 6th year running by independent reviewer carehome.co.uk.

**For more information or to visit our Show Suite  
call our friendly team today: 01143 521 179**

**At Outram Fields, people will always come first**

RESIDENTIAL CARE | DEMENTIA CARE | RESPITE CARE

**Luxury Care Home in Sheffield**

Outram Fields Care Home, 250 Twentywell Lane, Bradway, Sheffield S17 4QF

[www.cinnamoncc.com/outramfields](http://www.cinnamoncc.com/outramfields)



## **SPEED WATCH**

Speed Watch is currently very limited due to a lack of volunteers. We are aware that there is continuing concern about the speed of traffic at several locations in Holmesfield and Millthorpe. If residents are concerned and wish to make a positive contribution then please contact Councillor Phil Reaney on 0114 289 1167.

---

## **SPEED INDICATOR DEVICES**

We are still proceeding with the application for the Speed Indicator Devices and below are the consultation from Derbyshire County Council on the three proposed locations.

---

## **HOLMESFIELD CHURCH WALKING GROUP**

### BIRCHOVER STANTON MOOR WALK

There is no January walk planned but on **Wednesday 28th February** at 10.00am, Robin Greetham will lead a circular walk starting from the Druid Inn, Birchover (DE4 2BL). The walk starts out heading towards the Cork Stone then the Nine Ladies stone circle on Stanton Moor. After walking to Barn Farm we will walk back to the Druid Inn for lunch (optional). The walk is about 4 miles long and there is a short cut.

*If you would like to come just turn up on the day.*

The cost of the walk is £5 and the proceeds will go to Holmesfield Church.

Please phone Robin on 01246 412767 if you have any queries.

---

## **HOLMESFIELD GARDENING ASSOCIATION**

In January we had an entertaining quiz night with an excellent quiz master – Mr. Peter Chatterton. He did an excellent job in proving what a low I.Q. our chairman has!

On Wednesday **7th February** it is our AGM plus buffet supper. Additionally our hyacinth bulbs will be judged.

On **Wednesday 6th March** we have a talk entitled *The History of the National Gardens Association* given by Hildegard Wiesehofer.

As ever, all are welcome.

*Robin Greetham*

---

## **REPORTING HGVS FLOUTING WEIGHT LIMIT**

Vehicles flouting the weight restrictions through the Parish can now be reported as traffic incidents on the Derbyshire Constabulary website:

[www.derbyshire.police.uk/ro/report/rti/rti-b/report-a-road-traffic-incident/](http://www.derbyshire.police.uk/ro/report/rti/rti-b/report-a-road-traffic-incident/)



# CONNECTRICAL

ELECTRICAL INSTALLATION SOLUTIONS

---

## YOUR LOCAL TRUSTED **ELECTRICIAN**

UPGRADES RE-WIRING FUSE BOARD EICR FAULT FINDING

### WHY CHOOSE US?

Our Electricians are committed to providing honest, friendly, and on-time Electrical Services. We pride ourselves on providing the service you need at a high standard, and at a competitive market rate.

- ★ Five Star Service
- ☑ Fully Certified
- 👍 Quality Assurance
- 💬 Quick Response

Conor Dubik

**07500 864 746**

conor@connectrical.co.uk



The Barn, Cowley Lane, Holmesfield, Dronfield, S18 7SD

**WWW.CONNECTRICAL.CO.UK**

## **DRONFIELD POLICE SAFER NEIGHBOURHOOD TEAM**

Dronfield SNT would like owners of keyless entry cars to consider the following crime prevention information. Vehicles with keyless entry unlocks automatically when the key comes within a short-range distance of the vehicle, this can be from inside a pocket or bag. Useful tips to help secure your vehicle. Keyless car theft or 'relay theft' is when a device is used to fool the car into thinking the key is close by. This unlocks the car and allows the ignition to start. Thieves only need to be within a few metres of your car key to capture the signal, even if it's inside your home. This means that even if your car and home are secure, thieves can still unlock, start and steal your car.



**Keep car keys safe:** When at home keep your car keys (and the spare) away from the car to disrupt communication range, avoid leaving them near your door or window. Use a signal-blocking pouch • Put the keys in a screened or signal blocking pouch, such as a Faraday Bag, always check the bag or pouch is still working every few months. Turn off the fob's wireless signal • Wireless signals on some keyless fobs can be turned off. Look in your car manual to see if this is possible, if not, contact your vehicle manufacturer. • Reprogramme your keys when you buy a secondhand car, this will erase the code from the car key to the car itself. Meaning a spare car key that is not in your possession can no longer be paired, leaving it susceptible to theft. Contact your local Master Locksmith Association (MLA) approved auto locksmith.

**Additional physical security:** Steering wheel lock, pedal boxes and gear stick locks, tested to Sold Secure can be an effective tool in the fight against keyless thefts, purely for the reason that it cannot be compromised via technology. It's also worth speaking to your vehicle dealership about installing an aftermarket immobiliser approved by the manufacturer.

**Watch for illegal tow trucks:** Thieves often attempt to lift vehicles from the street. If you see a towaway crew acting suspiciously, especially if their vehicle isn't branded or if they're not in uniform please report it immediately.

**Parking:** If you have a garage, use it to secure your vehicle in. Parking on the driveway, park as close to the property as you can.

As with any additional security for vehicles, try to purchase devices that are:

Thatcham quality assured: [www.thatcham.org](http://www.thatcham.org),

Sold Secure tested: [www.soldsecure.com](http://www.soldsecure.com),

Secured by Design approved: [www.securedbydesign.com](http://www.securedbydesign.com).

*PCSO 12853 Jonathan Flower, Dronfield SNT  
E-mail: [Jonathan.flower@derbyshire.police.uk](mailto:Jonathan.flower@derbyshire.police.uk)  
Mobile: 0773 498 5821*

# THE NAIL & BEAUTY STUDIO

01246 411062

NAILANDBEAUTY7@OUTLOOK.COM

Dronfield based salon Established over 40 years ago. The Nail & Beauty Studio welcomes clients new and old to Dronfield. We offer a warm, friendly atmosphere and a full range of beauty, nail and body treatments using leading skin and nail care brands.

- **Facial skincare**
- **Nail treatments**
- **Body and holistic massage therapies**
- **SkinPen microneedling**
- **Laser hair removal and skin rejuvenation.**

AQUAPURE



illumiFacial®



SkinPen  
BY CROWN AESTHETICS

GUINOT  
INSTITUT • PARIS





Formally Helen O'Grady Drama Academy. New name, new logo, same GREAT programme.

## DEVELOPING CONFIDENCE, COMMUNICATION AND CREATIVITY

### Everyone is talking about our classes!

In this exciting world of technology where many children have become more computer literate than their own parents and schools have large budgets to develop technology, there is an after school activity everyone is talking about.

In this fast-moving world, many children are learning to communicate by text, email and social networking and, because of this, they may lack the essential talking skills necessary for them to speak up with confidence and have something worthwhile to say and interesting to listen to.

Success in later life is often dependent on our development as a child. Building sound verbal communication skills in the early years is paramount to unlocking the world in which we live. Realising a child's creative and expressive potential through drama is a key to a child's healthy development.

Term is well underway for Drama Kids, and Principal Lauren Steel is very excited to be welcoming so many new children into classes. Lauren said: "It is amazing how quickly the new ones settle into our classes. Because the curriculum can easily be adapted to challenge children of any ability, no-one feels threatened and all students can develop at their own pace, while being part of something positive and successful. Classes are great fun and, in such an environment, children learn very quickly!"

These affordable classes are available in;

- Holmesfield Village Hall
- Locations across Sheffield

Please call the office on 07393 201 229 or email [sheffield@dramakids.co.uk](mailto:sheffield@dramakids.co.uk) to find out more and to learn how children can have the chance to try a lesson for free!





# POWER TOOL ACCESSORIES

+44 (0)114 261 7200  
info@castlebrooke.co.uk

[www.castlebrooke.co.uk](http://www.castlebrooke.co.uk)

## The Foot Practitioner

Foot care in the comfort of your home

### Treatments Include:

- Toenail cutting
- Corns and Callus
- Thickened Nails
- Cracked Heels

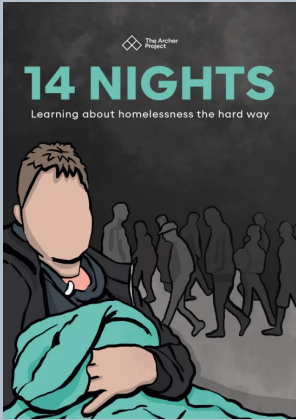


Keep your feet healthy book your appointment today

Lucy Symons DipCFHP, MPSPract

Tel 0114 2890271 / 07803 175321

Holmesfield Parish Church Proudly Presents  
*A talk by Mr. Tim Renshaw, CEO*  
who had a 14 night sleep-out in aid of



**The Archer  
Project**

A charity based at Sheffield  
Cathedral supporting  
homeless people

**Friday 22<sup>nd</sup> March**

**6.30 pm**

*at*

**Holmesfield Church Hall**

*Free entry*

*Donations gratefully received*

**Light refreshments will be served**

Bookings not necessary – any queries, please  
contact Robin & Jane on 01246 412767

**Proceeds to The Archer Project**



**DERBYSHIRE COUNTY COUNCIL**

**PART VIIA HIGHWAYS ACT 1980**

**NOTICE FOR WORKS TO BE EXECUTED BY PERSONS OTHER THAN THE COUNCIL**

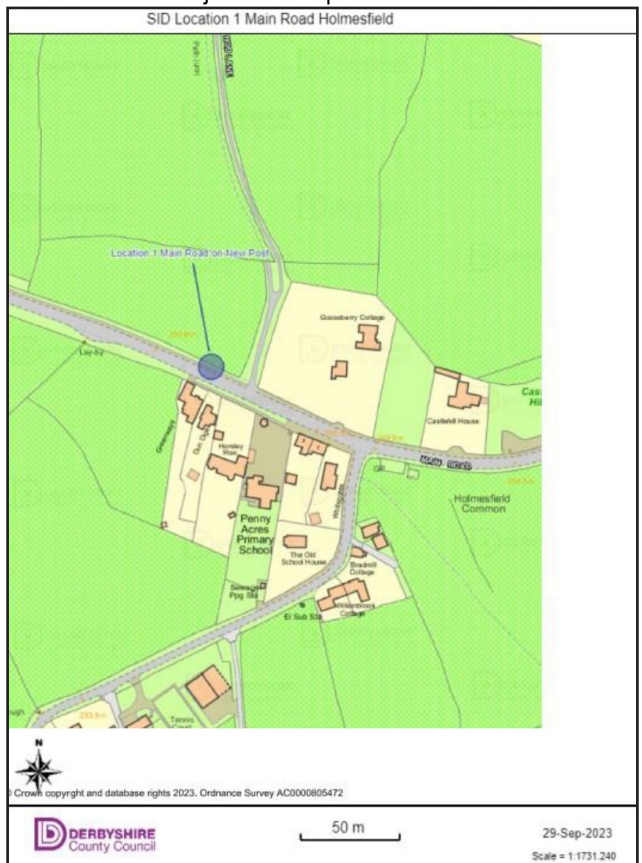
**NOTICE IS GIVEN** that Derbyshire County Council in pursuance of the provisions of the Highways Act 1980 propose to grant to Holmesfield Parish Council permission under Section 115E of the Highways Act 1980 to place a Speed Indicator Device on or in the highway known as Main Road, Holmesfield at the location as shown in blue on the attached plan. This proposal is considered necessary to assist in providing a service for the benefit of the public or a section of the public.

Details of the proposal and plans may be inspected free of charge from Holmesfield Parish Council or by appointment at the Main Reception, County Hall, Matlock during normal opening hours until 16 February 2024.

Any person wishing to object or make representations on the proposals should do so by email [highways.hub@derbyshire.gov.uk](mailto:highways.hub@derbyshire.gov.uk) or in writing to Highways Hub, Room 199b, County Hall, Matlock, Derbyshire DE4 3AG quoting reference 37019927, by no later than 16 February 2024, stating the grounds on which the objection or representation is made.

Dated this 16 January 2024

Chris Henning  
Executive Director  
Place  
County Hall  
Matlock  
DE4 3AG



# DERBYSHIRE COUNTY COUNCIL

## PART VIIA HIGHWAYS ACT 1980

### NOTICE FOR WORKS TO BE EXECUTED BY PERSONS OTHER THAN THE COUNCIL

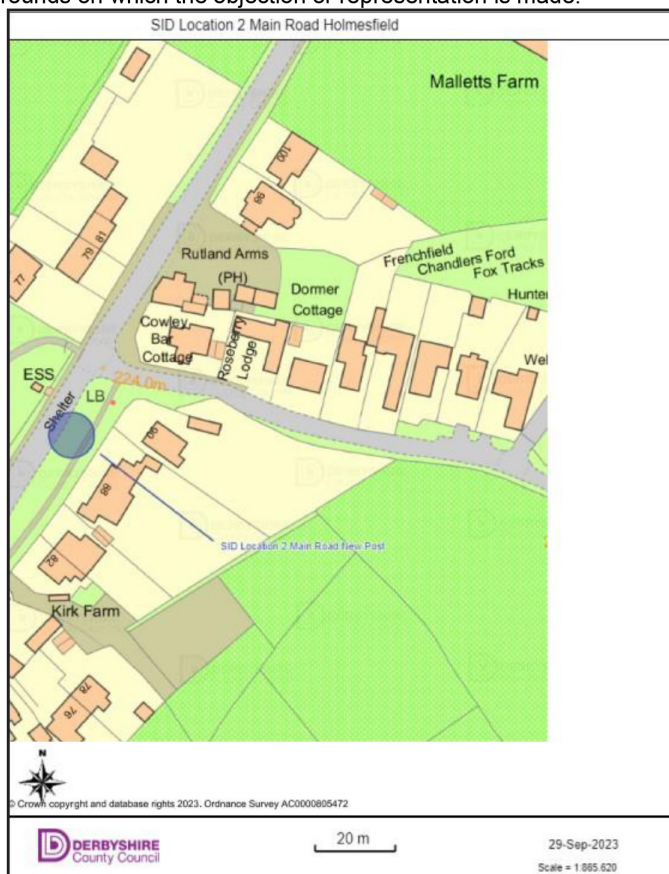
**NOTICE IS GIVEN** that Derbyshire County Council in pursuance of the provisions of the Highways Act 1980 propose to grant to Holmesfield Parish Council permission under Section 115E of the Highways Act 1980 to place a Speed Indicator Device on or in the highway known as Main Road, Holmesfield at the location as shown in blue on the attached plan. This proposal is considered necessary to assist in providing a service for the benefit of the public or a section of the public.

Details of the proposal and plans may be inspected free of charge from Holmesfield Parish Council or by appointment at the Main Reception, County Hall, Matlock during normal opening hours until 16 February 2024.

Any person wishing to object or make representations on the proposals should do so by email [highways.hub@derbyshire.gov.uk](mailto:highways.hub@derbyshire.gov.uk) or in writing to Highways Hub, Room 199b, County Hall, Matlock, Derbyshire DE4 3AG quoting reference 37019927, by no later than 16 February 2024, stating the grounds on which the objection or representation is made.

Dated this 16 January 2024

Chris Henning  
Executive Director  
Place  
County Hall  
Matlock  
DE4 3AG



# DERBYSHIRE COUNTY COUNCIL

## PART VIIA HIGHWAYS ACT 1980

### NOTICE FOR WORKS TO BE EXECUTED BY PERSONS OTHER THAN THE COUNCIL

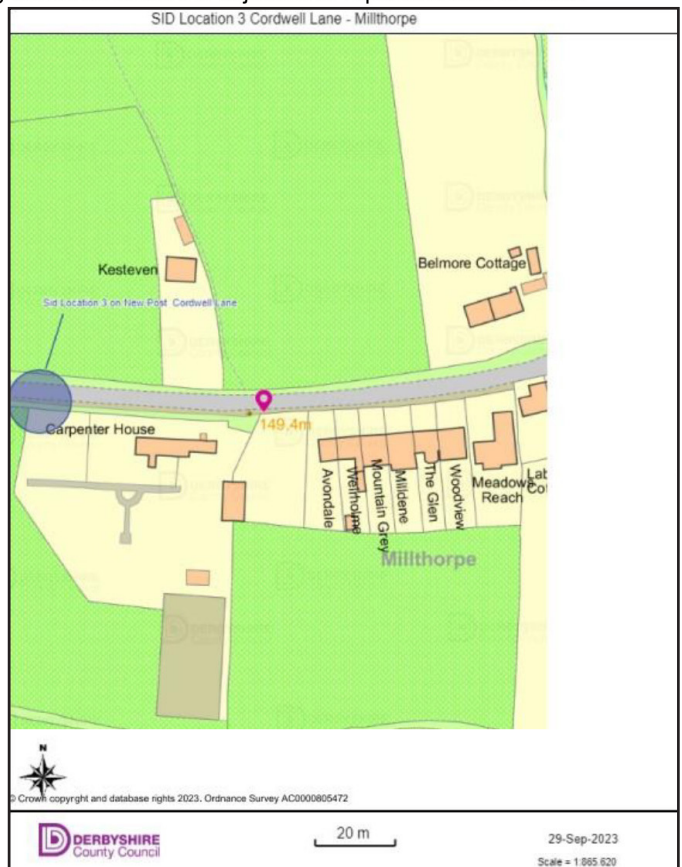
**NOTICE IS GIVEN** that Derbyshire County Council in pursuance of the provisions of the Highways Act 1980 propose to grant to Holmesfield Parish Council permission under Section 115E of the Highways Act 1980 to place a Speed Indicator Device on or in the highway known as Cordwell Lane, Millthorpe at the location as shown in blue on the attached plan. This proposal is considered necessary to assist in providing a service for the benefit of the public or a section of the public.

Details of the proposal and plans may be inspected free of charge from Holmesfield Parish Council or by appointment at the Main Reception, County Hall, Matlock during normal opening hours until 16 February 2024.

Any person wishing to object or make representations on the proposals should do so by email [highways.hub@derbyshire.gov.uk](mailto:highways.hub@derbyshire.gov.uk) or in writing to Highways Hub, Room 199b, County Hall, Matlock, Derbyshire DE4 3AG quoting reference 37019927, by no later than 16 February 2024, stating the grounds on which the objection or representation is made.

Dated this 16 January 2024

Chris Henning  
Executive Director  
Place  
County Hall  
Matlock  
DE4 3AG



## CAN ANYONE HELP OPEN REACH IDENTIFY THE OWNER OF THIS LAND

To whom it may concern,

Openreach have received a request from Yorkshire Water, to provide a new underground communications feed to the sewage pumping kiosk at the location detailed below, which falls within the boundary of Holmesfield Parish Council.

The duct would need to be installed in a parcel of land which has not been registered with The Land Registry, this land is directly to the west of Mill Lane, serving The Mill, Mill Cottage and surrounding properties.

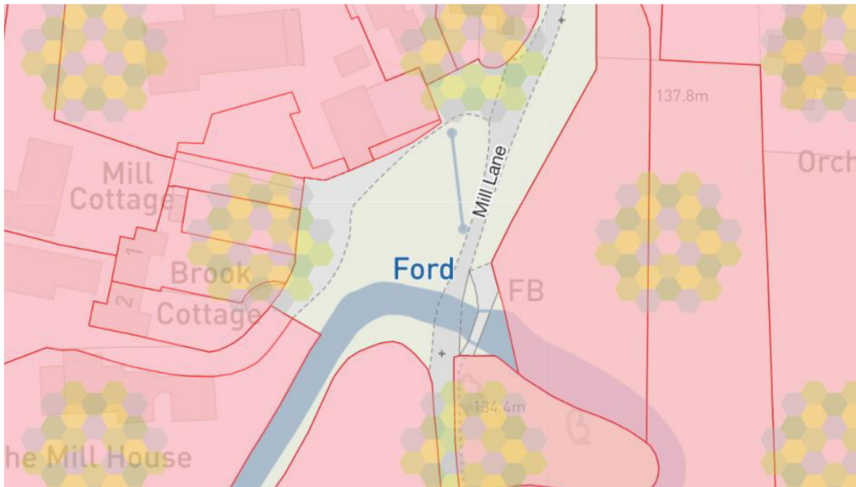
Openreach have been unsuccessful in identifying the land owner as the land in question has not been registered with The Land Registry and enquiries with the local residents, Derbyshire Council, Haddon Hall Estate and Chatsworth Estate have not identified the owner.

If the owner of the land cannot be identified, Openreach would need to consider an application to the Upper Lands Tribunal for a compulsory wayleave.

The location is;

MILL LANE, MILLTHORPE S18 7WL

GRID REF - 431700,376271



Please email [ian.conroy@openreach.co.uk](mailto:ian.conroy@openreach.co.uk)

Any assistance would be greatly appreciated.



# Cherry Tree Farm

---

Cowley Lane, Holmesfield, S18 7SD



## Free Range Eggs

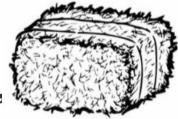


PAY AT THE FARM GATE

## Haylage & Hay



A VARIETY OF SQUARE BALE SIZES  
TO SUIT ALL USERS DELIVERED AS REQUIRED.



HAY AND STRAW.

## **AGRICULTURAL CONTRACTING**

---

FIELD AND HEDGE RESTORATION,

RESEEDING, ROLLING, CHAIN HARROWING, HEDGECUTTING

FENCING, MUCKSPREADING, DITCH CLEANING & DRAINAGE,

SNOW CLEARANCE, ETC.

HARDCORE SUPPLIED AND LAID FOR YARDS, ROADS ETC.

---



**Mark Timperley TEL: 0797 0912 959**

[www.derbyshirehaylage.co.uk](http://www.derbyshirehaylage.co.uk)

## **TEMPORARY ROAD WORKS**

**08.00 Monday 5th to 17.00 Friday 9th February 2024:** Road closure on Dobbin Lane (Barlow side of junction with Barlow Lees Lane), Barlow to facilitate repair and maintenance work by Severn Trent Water.

**Monday 12th to Wednesday 14th February 2024:** Road closure on Baslow Road (near the bus turnaround by Gillfield Wood), Totley to facilitate repair and maintenance work by Sheffield City Council.

**07.00 Wednesday 3rd to 16.00 Friday 5th April 2024:** Road closure on Horsleygate Lane (near the Caravan Site), Holmesfield to facilitate repair and maintenance work by Severn Trent Water.

Derbyshire County Council apologises for any inconvenience caused while work takes place. Anyone needing further information should ring **Call Derbyshire** on 01629 533190.

---

## **BIN COLLECTIONS - FEBRUARY 2024**

Thursday 1st / Friday 2nd February : Burgundy Bin collection

Thursday 8th / Friday 9th February : Black Bin collection

Thursday 15th / Friday 16th February : Burgundy Bin collection

Thursday 22nd / Friday 23rd February : Black Bin collection

Thursday 29th / Friday 1st March : Burgundy Bin collection

---

## **HOLMESFIELD VILLAGE HALL BOOKINGS & PARTY HIRE**

Please contact the individual organisation prior to your visit as pre-booking might be required for health & safety.

We are here for your children's party bookings and celebrations throughout the summer.

Contact Lucy Perry on 0775 2478866 to book your children's party or family celebration. Regular Saturdays and Sundays available for hire throughout the year with plenty of space at the Village Hall for bouncy castles! Featuring a well equipped kitchen. Remember there is a discount on hire for local residents.

Booking Info: email: [holmesfieldvillagehall@outlook.com](mailto:holmesfieldvillagehall@outlook.com) or ring **0775 2478866**.

---

## **DRONFIELD WALKING GROUP**

Dronfield Walk Every Friday - Distance: 2.5-3.5 miles pavement and rural walking.

Time: 1.30pm, Meeting Point: Meet outside Dronfield Sports Centre, S18 1PD.

Additional info: Walks are often hilly on various terrains. Occasionally the group take a flatter route.

Contact Hayley: 07971 654854 for further information and group walk dates.



OUTRAM FIELDS  
CINNAMON LUXURY CARE

**OPENING**  
**FEBRUARY 2024**  
**BOOK A TOUR**  
**TODAY**



# Planning Living Well

FOR FUTURE LIVING EVENT

WITH MULTIPLE SCLEROSIS

28TH FEBRUARY 6PM-7.30PM

We invite you to join us for an informative legal and financial event on planning for future living where we'll guide you how to effectively manage and pay private care home fees.

Our Speakers will give independent advice on:

- ❖ The importance of having a will and Lasting Powers of Attorney for both Finance and Health and Welfare
- ❖ Options available to pay for care including: equity release, care annuities, sale of property, investments
- ❖ Insights into the sensitive topic of deliberate deprivation of assets.

Speakers:

Suzanne Porter - Director and Head of Wills and Probate at Wake Smith Solicitors, Sheffield  
Erica Dietsch and Jonathan Rowley of Hamnett Wealth Management - both SOLLA Accredited Later Life Advisers



7TH MARCH 2.30PM-3.45PM

We invite you to join us for an informative talk on Living Well with MS. We're delighted to have Director of Hallamshire Physiotherapy Chartered Physiotherapist Karen Hodgson MSc as our speaker for this session who will cover the following topics:

- ❖ MS - types, diagnosis and symptoms
- ❖ Medical management of MS
- ❖ Physiotherapy and MS - what, when, why?
- ❖ The importance of Exercise
- ❖ Future Events with Hallamshire Physio



**OTHER EVENTS TO TAKE NOTE OF:**

**Strength and Conditioning for Older adults**  
- Thursday April 18th, 2.30pm – 3.45pm

**Living well with chronic pain**  
- Thursday May 16th, 2.30pm – 3.45pm

CANAPÉS &  
REFRESHMENTS  
WILL BE SERVED

As places are limited, booking is essential so please call Claire on **0114 4933 981** or email: [outram.haa@cinnamoncc.com](mailto:outram.haa@cinnamoncc.com) to reserve your place.



RESIDENTIAL CARE | DEMENTIA CARE | RESPITE CARE | POST OPERATIVE CARE

**Luxury Care Home in Sheffield**

Outram Fields Care Home, 250 Twentywell Lane, Bradway, Sheffield S17 4QF

[www.cinnamoncc.com/outramfields](http://www.cinnamoncc.com/outramfields)

# Millthorpe Nursery

**We're getting ready**



We're busy growing lots of lovely  
spring-flowering bulbs and plants and will be  
**back open in mid February**

We look forward to seeing you!

Millthorpe Lane, Holmesfield, S18 7SA



01142 890334



**Open Wednesday - Sunday 10am - 4pm**





## **CHARTERED SURVEYORS**

For all your professional property needs including  
Surveys, Valuations, Inheritance Tax/Probate,  
Matrimonial, Family Division, Tax Planning

Please contact Nick Riddle on 0797 327 3967 or email  
[nick@riddleandco.co.uk](mailto:nick@riddleandco.co.uk)

## **HOLMESFIELD VILLAGE SOCIETY**

Hi All

We hope you had a good New Year! Spring is hopefully just around the corner and Holmesfield Village Society are now planning for the year ahead.

Following a well-earned break in January we have now started to plan our calendar of events for the village for 2024.

We already have the annual favourites pencilled in for the second half of the year such as the *Pumpkin Trail*, *Remembrance Sunday*, *Santa's Grotto*, the *Christmas Tree and Carols* and we are inviting suggestions for events in April or May prior to the run up to *Village Week* in July which will include a *Treasure Hunt*, the *Vicar's XI Cricket Match*, *Quiz Night*, and hopefully a return to *Woodthorpe Hall* for a picnic.

We would love to hear what sort of activities or events you would like us to arrange in the village, so if you have any requests or ideas and also if you would like to be more involved in the Village Society then please let us know either by contacting one of the team directly or by using the email address below. We are a friendly bunch and really do want to hear from you – all suggestions will be considered!

Our goal once again for 2024 is to build upon our great community spirit – that's our main aim in every event we organise, and we can hopefully all have some fun along the way!

For more information, contribute ideas or ask any question at all, please email us at [holmesfieldvillage@gmail.com](mailto:holmesfieldvillage@gmail.com) and always keep an eye on our village Facebook page at [www.facebook.com/groups/holmesfield](http://www.facebook.com/groups/holmesfield) for event updates.

#loveholmesfield

---

## **HOLMESFIELD CHURCH CHRISTMAS LUNCH**

On behalf of Holmesfield St. Swithin's Church we would like to say a big thank-you to the following who were so generous with their contributions towards the lunch: Joan Dovenor, Christine & Trevor Taylor, Jill & Mike Hastings, Matthew & Judy Bull, Chris & Bev Blanksby, Liz Williams, Amanda & Costas Georgia, Gordon & Lorraine Simmonite, The Angel Inn public house and The Rutland public house.

*Jane and Robin Greetham*



## **HOLMESFIELD FLOWER ARRANGING CLUB**

Holmesfield Flower Arranging Club are not meeting in February. The committee are planning the programme for next year.

For further details of the club, please contact Diane Sheldon – Email: [Diane.sheldon1@btinternet.com](mailto:Diane.sheldon1@btinternet.com)



# The Angel

at Holmesfield



CHEF'S SPECIALS

SUNDAY LUNCHES  
LIGHTER LUNCHES

FINE WINES

LOCALLY SOURCED  
INGREDIENTS

JOIN US FOR  
FAMILY QUIZ NIGHT  
1ST SUNDAY OF THE MONTH

HOT DRINKS &  
CAKES

PERFECT FOR BIRTHDAY'S,  
CELEBRATIONS, FAMILIES & FRIENDS

Deliciously fresh GLUTEN FREE fine food

The Angel has been at the HEART of Holmesfield for many years and continues to provide fantastic food, cask ales and fine wines with a friendly welcome to all.



### Book your table

Online: [the-angel.reSOS.com](http://the-angel.reSOS.com)

Phone: 0114 289 0336

Email: [eat@angelatholmesfield.co.uk](mailto:eat@angelatholmesfield.co.uk)



WE LOVE PAWS



THROUGH OUR DOORS



Tuesday

Wednesday & Thursday 12pm-2pm 5pm- 8pm

Friday & Saturday 12pm - 8.30pm

Sunday 12pm - 5.30pm

### Food Served

Lunch Evening

CLOSED 5pm-8pm

12pm - 8.30pm

12pm - 5.30pm

ALWAYS GLUTEN FREE

Find us on

Main Road, Holmesfield,  
Dronfield  
S18 7WT



**2024 Market Dates for your diary!**

**Saturday 20th  
April**

**Saturday 13th  
July**

**Saturday 5th  
October**

**Saturday 7th  
December**

**Come & Support  
Lots of fantastic stalls,  
new and regular stall  
holders.**

**10am  
to  
2pm**

**The Angel, The Village Hall, St. Swithin's Church Hall.  
Three great venues to visit lots of great products**







# Isn't it about time you **switched** to your local Sparky!?

- Napit Registered - UKAS accredited
- Competent Person
- From a new light, socket, ring main to complete rewires
- Rewiring and Upgrading
- Fault finding and repairs
- Complete rewires
- Periodic Inspection and Testing
- Full Electrical Certification (EIC, MEIC and EICR's)
- Design
- Portable Appliance Testing (PAT)
- Security Lighting
- Electric Vehicle Charging Equipment Installation (C&G 2919-01 Qualified)
- Domestic, Industrial and Commercial Installations



07900 255608 [james@oakelectrical.uk](mailto:james@oakelectrical.uk)

Oak Electrical Solutions Ltd., Oak Cottage, 18 Main Road, Holmesfield, Dronfield S18 7WT

**[oakelectrical.uk](http://oakelectrical.uk)**

## **FARMING IN PROTECTED LANDSCAPES SUPPORT SCHEME**

Farmers and land managers in the Peak District National Park are being encouraged to continue to apply for funding to support landscape enhancement, access and conservation work through the *Farming in Protected Landscapes* (FiPL) programme.

The national FiPL programme, administered locally by the Peak District National Park Authority, has been extended 12 months, to March 2025, with an extra £2.4 million available for farmers and land managers in the 2024/25 financial year.

Since July 2021, the Peak District National Park has channelled £2 million to over 300 local farmers and land managers to bring benefits for climate, nature, people and place with an extra 1.2 million expected to be spent between now and April.

So far, the FiPL programme has supported 304 Peak District projects with works ranging from installing solar powered drinking troughs for livestock, creating habitat corridors for wildlife, to building a new hay barn to enable making late-cut, flower-rich hay, and planting close to 9kms of new hedgerows in the Hope Valley in association with the Hope Farmers Group.

In total, 35 ponds have been improved or created, 5511 trees planted, 49 historic structures conserved, restored or interpreted more effectively and 80 hectares of hay meadow restored. Educational access is being supported on 8 farms and 10 new permissive paths are in place.

The works bring benefits on the ground including supporting natural flood management, reducing carbon emissions from farms, improving areas for wildlife, and enhancing landscape features and historic assets. Many projects pave the way for enhanced opportunities for farmers to draw down funding from national schemes and/or enhance their business.

Phil Mulligan, chief executive of the Peak District National Park, said: "The National Park is a living, working landscape that supports communities and businesses, and is home to a huge range of habitats and species. It's also a place enjoyed by millions of visitors and residents every year. The FiPL programme has made it possible for us to support one-off projects that benefit nature and cultural heritage-friendly farm businesses.

"It's fantastic to see farmers taking up the opportunities to increase habitats, improve biodiversity, mitigate the impacts of climate change, and provide opportunities for people to enjoy and understand the landscape and its cultural heritage. It's about investing in the environment and people to help build sustainable farm businesses that look after the landscape now and for the future."

Some standout successes of the FiPL programme in the Peak District National Park to date include significant repairs to 300 metres of Doctor's Gate bridleway which protects sensitive moorland habitat; restoration of a stone-built Victorian water header tank structure at Sheldon; and support for the creation of wood pasture projects at Baslow and Hayfield and agro-forestry farming systems at Great Longstone, Green Fairfield and Wincle. At Minninglow, access off the High Peak trail has been provided to an award winning limekiln restoration project.

Funding is available for projects which deliver for one or more of the following themes: climate – including reducing flood risk; nature – targeting nature recovery; people – including enhanced access, volunteering, and ways to discover, enjoy and understand the landscape; place – including landscape, cultural heritage and support for increasing the resilience of nature friendly sustainable farm businesses.

The National Park team are particularly interested in hearing from farmers with ideas for projects that will deliver across the themes whilst supporting the development of their business, possibly through direct sales or enabling transition to a business model that can be supported more effectively through national schemes.

A local panel including farmer representatives assesses projects to ensure they provide value for money, a legacy from the work, and meet at least one of the scheme's outcomes and supports the aims of the National Park Management Plan.

To find out more about the support that is available, visit [www.peakdistrict.gov.uk/fipl](http://www.peakdistrict.gov.uk/fipl), speak to a farm adviser or FiPL officer on 01629 816200, or email: [farming@peakdistrict.gov.uk](mailto:farming@peakdistrict.gov.uk)



**1<sup>ST</sup> CLASS**  
 ROOFING & BUILDING LTD  
 40 YEARS IN THE TRADE



**PROFESSIONAL SPECIALISTS IN FIBREGLASS ROOFING**



**FIBREGLASS SPECIALISTS:**

FIBREGLASS IS HIGH STRENGTH AND LIGHTWEIGHT. WHETHER SIMULATING LEAD OR COPPER SHEATHING, REPAIRING LISTED BUILDINGS OR USE IN ENVIRONMENTALLY SENSITIVE AREAS, FIBREGLASS PROVIDES THE PERFECT ANSWER AND CAN BE INSTALLED RAPIDLY ON BOTH DOMESTIC AND COMMERCIAL APPLICATIONS BY OUR FULLY TRAINED STAFF TO ENSURE WORK OF THE HIGHEST STANDARD.

**OTHER SERVICES AVAILABLE:**

- FASCIA / SOFFIT / GUTTERING
- ROOF MAINTENANCE
- SLATING AND TILING
- POINTING
- CHIMNEY WORK
- DRY RIDGE
- GUTTER CLEANING
- STORM DAMAGE
- ALL TYPES OF BUILDING WORK UNDERTAKEN



WE ARE A FAMILY RUN BUSINESS SUPPLYING A VAST AMOUNT OF EXPERIENCE IN BOTH BUILDING & ROOFING, & FULLY TRAINED STAFF OFFERING WORK OF THE HIGHEST STANDARD.



WHETHER IT BE A DOMESTIC OR COMMERCIAL PROPERTY, WHATEVER SIZE OF COMPLEXITY, WE HAVE THE EXPERTISE AND EXPERIENCE TO PROVIDE THE SOLUTION.



WE HAVE BUILT A 1<sup>ST</sup> CLASS REPUTATION ON THE BASIS OF PROVIDING CLIENTS WITH A QUALITY SERVICE COMBINED WITH EXCELLENT VALUE FOR MONEY.



01246 860690 / 07890676623



1ST CLASS ROOFING AND BUILDING LTD



WWW.1STCLASSROOFS.CO.UK  
 FIBREROOFS@HOTMAIL.CO.UK



@1STCLASSROOFINGANDBUILDINGLTD



## **GLOW! : HOLMESFIELD YOUTH CLUB**

Glow! youth club has had a great start to the year.

We have welcomed Sophie from Public Health who ran workshops to advise young people how to access health services (or not). It's fantastic to see how public sector organisations are engaging with our young people to hear their voice before making decisions on their behalf. It gives our young people confidence to engage in wider society discussions.

Our young people have been supported for a further term by Extreme Wheels Roadshows and we are proud of our home-grown young leaders.

One of our regular adult leaders has left to have a baby and from March it will leave us short of leaders to run the group every week. As a community this is your opportunity to step up and volunteer one Monday evening - occasionally or weekly if you like - to be present with us to ensure that we are able to continue running. You don't need to have specific skills, you just need to be open to being around a marvellous bunch of local teenagers. If craft is your thing then come along and have a natter around a table with young people; if sport is your thing, come and lead some games; if pool is your thing - we have some youngsters that would give you a run for your money (although we don't gamble!!); if serving from the tuck shop is your thing, come and serve.

Call Sarah Webb for more info: 07929 582233 or email [sarah@webbhome.co.uk](mailto:sarah@webbhome.co.uk)

We are also wanting donations of bottle tops from large drinks bottles for an activity in March - not sports caps or wide milk bottle tops.

---

## **TALES OF OLD HOLMESFIELD**

Having retired in 1988 I decided to delve deeper into the events of Holmesfield using my new video camera. In addition I was approached by a friend on Cowley Lane who asked me if I would agree to deliver Meals on Wheels which I did because it would, I hoped, enable me to glean yet more information about the history of the village and this proved to be correct.

I was told about someone who worked for the Council as a sewage operative. He cycled to the local villages and carried a huge scoop with which he performed his job. He was also the Holmesfield slaughterman and cut hedges and trees. He lived in a bungalow on the south side of the village and kept his Massey Ferguson tractor in one of the bedrooms, presumably with his partners' agreement.

Another recipient of Meals on Wheels was an former employee of the Barlow Hunt who told me of an incident one day whereby a fox was hiding in a large dry water drain pipe outside which were the hounds, all sniffing the ground and eager to carry out their duties. The fox, however, having an abundance of neurones seized his or her opportunities and dashed out, weaving in and out of the pack who were intent on sniffing every blade of vegetation to heighten their expectation of a kill.

I hope to share more anecdotes and reminiscences next month.





**Edward Serrell**  
**PLUMBING**  
**HEATING & LTD**

 **Commercial & Domestic  
Plumbing**

 **Natural Gas, Oil or LPG Boiler  
Installations / Repairs**

 **Servicing / Landlord Certificates**

501 Newbold Road, Chesterfield, S41 8AE

T: 01246 387 120 / 07966 88 43 68

E: [edwardserrellplumbing@gmail.com](mailto:edwardserrellplumbing@gmail.com)

W: [www.edsplumbing.co.uk](http://www.edsplumbing.co.uk)

 Edward Serrell Plumbing & Heating Ltd





## TrainwithSuzy

*I'm a personal trainer and specialise in fitness & fat loss and deliver bespoke 1-2-1 training programmes to suit your goal. Any level of fitness too.*

*I have my own private gym in Dore. If you haven't seen the results you were hoping for in the last few months then why not give personal training a try. It's varied, fun and we get the results you desire.*

*Book your free consultation by contacting me on  
07825 167411*

*Feel free to check out my website for more details:  
**[www.trainwithsuzy.com](http://www.trainwithsuzy.com)***



## Mollart-Cox Engineering

**The UK's most diverse privately owned sub-contract machining facility. Specialising in Deep Hole Drilling, Honing, large CNC turning and 5 axis machining and Gun Drilling.**

**Web: [www.mollartcox.co.uk](http://www.mollartcox.co.uk) Tel: 01246 458090**

**Unit 1, Broombank Road, Chesterfield Trading Estate, Chesterfield  
S41 9QJ**

# JR GARDENING

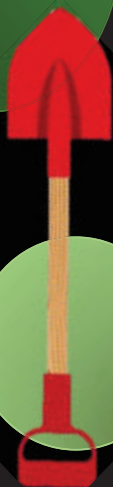
Mowing, strimming, hedge  
trimming, fencing, patios  
& driveway cleaning

All jobs considered

**CALL US TODAY FOR A  
FREE QUOTE**

Phone Jason on 07942 640145

Friendly, honest, reliable &  
trustworthy service



# We're here for everyone

We give people the knowledge and confidence they need to find their way forward - whoever they are, and whatever their problem.

Volunteer with us and make a real difference to people's lives. Find out more at <https://www.citizensadvicened.org.uk>

If you would like to talk to us about volunteering call 07305078145



North East  
Derbyshire

Registered charity number 1118194



# AIR ACCESSORIES (SHEFFIELD) LTD

*"The Single Source For Pneumatics & Hydraulics"*



## PRIMARY DISTRIBUTORS FOR:

Emerson, Parker, SMC, Norgren, PCL, Wade, Bosch Rexroth, Metal Work, Domnick Hunter, Hydrovane, Camozzi, Spirax, Compair, Desoutter, Ross, Festo, ASCO, Joucomatic, Atlas Copco, and Origa

## PNEUMATIC & HYDRAULIC CYLINDER MANUFACTURE & REFURB

Pneumatic Tie Rod & Profile Cylinders 32mm - 250mm Manufactured From Stock  
Imperial (Martonair Interchange) 3" - 14" Manufactured From Stock.  
Hydraulic Cylinders Produced To Pattern, Sample or Drawing - Tie Rod & Mill  
All Types Of Pneumatic & Hydraulic Cylinders Repaired Often Within 24Hrs

## BESPOKE & SPECIALISED

Protective Screens – COVID-19  
Pneumatic Control Design & Manufacture  
Special Purpose Machine Builders  
Modular Guarding Systems, Walkways & Ergonomics  
Rodless & Linear Slides Also Refurbished  
General Machining, Slotting, Milling & Turning  
Technical Design (CAD), Advice & Commissions  
Safety Devices – Rod Locking Units & Failsafe Equipment  
Standard & Bespoke Seal Supplies; Viton, Nitrile & Silicone Etc.

## TRADE COUNTER

Extensive stocks of Cylinders, Valves, Couplings, Air Prep, Hose, Fittings  
(compression, Push-in & Malleable), Air Tools, Seal Kits  
Pneumatic Quality Barrel & Piston Rod.

**Tel: 0114 2582086    Fax: 0114 2552836**

Escafeld Works, Meersbrook Park Road, Sheffield, S8 9FN  
[info@airaccessories.co.uk](mailto:info@airaccessories.co.uk)    [www.airaccessories.co.uk](http://www.airaccessories.co.uk)

## **MARCH NEWSLETTER**

All copy for the March Newsletter *must* be received by 18th February to ensure inclusion in the magazine.

Holmesfield Parish Council welcomes the submission of articles pertinent to Holmesfield by residents for publication in the Parish Newsletter.

Any thoughts and opinions are those of the individual(s) and may not necessarily be shared or endorsed by Holmesfield Parish Council.

Any submissions must include full name and contact details before publication can be considered by the editor.

Please send your articles typed via email if possible. This is especially important for images you wish to include.

Please email any articles to: [holmesfield-newsletter@hotmail.com](mailto:holmesfield-newsletter@hotmail.com)

---

## **MOBILE LIBRARY**



Derbyshire County Council's mobile library service operates on a 4-weekly cycle. The mobile library will be at 6 Park Rise, Holmesfield between 10.25am and 10.50am on **Monday 19th February**.

The staff look forward to welcoming you on board to browse the stock and access their services.

The mobile libraries have a lift if you use a wheelchair or have mobility problems.

For further information call 01629 533444, or email: [ask.library@derbyshire.gov.uk](mailto:ask.library@derbyshire.gov.uk)

---

## **3rd HOLMESFIELD SCOUT GROUP**

### **Scouts and Explorers:**

Meet Tuesday nights at the usual times.

### **Beavers and Cubs:**

Meet Wednesday nights at the usual times.

### **Holiday Dates:**

Scouts and Explorers will be closed on 20th February 2024.

Beavers and Cubs will be closed on 21st February 2024.

***Please note that all four sections have a waiting list. If you have children you would like to join the group, please get their names on our waiting lists as soon as possible – don't wait until they are the right age, to avoid disappointment.***

Please contact Richard Wilkinson on 01246 412576, or email : [thirdholmesfieldscoutgroup@hotmail.co.uk](mailto:thirdholmesfieldscoutgroup@hotmail.co.uk) for further information.

# Local award winning company providing design and installation of quality gardens and landscapes.

From driveways and patios to complete garden projects. For individual design, planning and landscaping by our experienced, friendly team:

View our portfolio at: [www.jabird.co.uk](http://www.jabird.co.uk)



**JA  
BIRD  
LAND  
SCAPES** LTD

**T 0114 258 9290**  
**E [james@jabird.co.uk](mailto:james@jabird.co.uk)**  
**W [www.jabird.co.uk](http://www.jabird.co.uk)**

1-5 Buttermere Road  
Sheffield S7 2AX







# Got a computer?

## Having Problems?

Is it running slow? Does it stop responding?  
Having problems running the latest games or  
applications? Broadband installation problems?

### *Give me a call!*

I am available for home visits at any time that suits  
you (including evenings and weekends) to discuss  
how I can help sort out your computer problems.

I can also suggest possible upgrades which may  
improve the performance of your system, or even  
build you a system to your specific requirements.

Phone: 0114 247 2619

Mobile: 078 1746 4703

Email:

[service@timbrownplus.co.uk](mailto:service@timbrownplus.co.uk)

## Tim Brown

Building,  
Installation,  
Upgrading and  
Troubleshooting  
Computer  
Systems

Over 30 years'  
Professional  
Experience



***Design, Manufacture and Installation of Quality Fabricated  
Products in Mild Steel, Stainless Steel and Aluminium***

***Units 9 & 10 Foxwood Road, Dunston Trading Estate  
Chesterfield. S41 9RF***

***Telephone: 01246 450619/454315***

***E-Mail: [cenfabs@aol.com](mailto:cenfabs@aol.com)***

## **DECEMBER 2023 WEATHER**

'WET, WET, WET', springs to mind as the best brief description of December in Holmesfield. I don't mean the Scottish rock band, I mean the rainfall that seemed to be endless with only four days when there was no rain. The total for the month was 174mm which is well over double what is normally expected and certainly the wettest December that I have recorded over the last twenty years. The 9th and the 27th were both very wet days.

It is interesting to look at our rainfall for the whole of 2023. The first six months were relatively dry, February and April were particularly dry with less than an inch recorded over each month. However, the last six months of 2023 were very wet, setting a long term record. I recorded 1,172mm of rainfall which is almost 40% more for an average year. As a consequence, many of the fields around Holmesfield are waterlogged and we are being warned of a coming shortage of root vegetables. The years 2012 and 2019 as a whole were actually slightly wetter than 2023 according to my records but the last six months of the year were extremely wet.

In terms of temperature, December was almost one degree warmer than average with my maximum being 11.7°C on Christmas Eve. We did have a cold spell of several days at the beginning of the month and the temperature dropped to -4.1°C on 2nd December.

It was also a very windy month with a high of 65mph at 7am on Thursday 21st December. It was actually the highest wind speed that I have recorded for the month of December over the last twenty years but not the highest wind speed that I have ever recorded. January seems to be a windy month in Holmesfield and I recorded 74mph in January 2007 and 78mph in January 2012.

My rain gauge was very busy in December 2023. It uses a tipping bucket in a seesaw arrangement that sends a signal each time the small bucket is full of rain. Sir Christopher Wren is usually credited with the invention of this tipping bucket arrangement in about 1660 but the Chinese were experimenting with rain gauges in the 1400s. They were interested in trying to predict how good the next harvest would be.

**Brian Brown**

---

## **USE OF PUBLIC RIGHTS OF WAY**

There have been a number of complaints over the misuse of footpaths in the Parish by cyclists and horse riders. The designation of each right of way is integral to who can use:

- **Footpaths:** for walking, running, mobility scooters or powered wheelchairs
- **Bridleways:** for walking, horse riding, bicycles, mobility scooters or powered wheelchairs
- **Restricted byways:** for any transport without a motor and mobility scooters or powered wheelchairs
- **Byways open to all traffic:** for any kind of transport, including cars (but they're mainly used by walkers, cyclists and horse riders).

# THE SHEFFIELD BED CO.

Find your ultimate sleep solution with The Sheffield Bed Co.



©Kaydian 2021

**kaydian**  
sleep in style

DELUXE  
BEDS

Smeaton Brothers  
**healthbeds**  
family bed makers since 1893

0114 2584404 – 21, Guernsey Road, Heeley, Sheffield, S2 4HG

# **UNDERSTANDING ANTI-SOCIAL BEHAVIOUR (ASB)**

We hear the term ASB often, but do you know what is classed as anti-social behaviour? Often reports may not be necessary or they're reported to the wrong agency. Find out the correct reporting method and how we can support you on Derbyshire's ASB Hub: [www.saferderbyshire.gov.uk/asbhub](http://www.saferderbyshire.gov.uk/asbhub)



## **Understanding anti-social behaviour (ASB)**

**We hear the term used often, but do you know what classes as anti-social behaviour?**

The law defines anti-social behaviour as behaviour that 'causes, or is likely to cause, harassment, alarm or distress to any person'.

### **What anti-social behaviour is:**

Anti-social behaviour covers many types of behaviour, such as:

- Noise nuisance
- Criminal damage, vandalism, graffiti
- Intimidation, threats, harassment
- Litter, dog fouling, fly tipping
- Deliberate fire setting
- Nuisance vehicles
- Drunken and rowdy behaviour in a public place or drug misuse
- Hate behaviour, targetting people because of their perceived differences.

**What we take into consideration:** How often the behaviour is happening, how serious it is and how it affects the people living in the community.

### **What anti-social behaviour is not:**

A lot of reports to us are not necessarily acts of ASB, such as:

- The sound of children playing or a baby crying
- Everyday living noises, such as toilet flushing, closing doors, vacuuming
- Minor personal disputes and differences
- Young people gathering socially, unless they are being intimidating
- Someone being parked outside of your home, where there are no lawful restrictions in place
- DIY and car repairs unless they are taking place at unsocial hours
- Civil disputes between neighbours (e.g. shared driveways)
- Religious or cultural practice.



**Hello all students under 25  
who live in Holmesfield or  
whose parents do...  
It's time to study again !**



**Do you need equipment or any other assistance  
related to your studies ?**

*Did you know you can apply to the **Holmesfield Educational Trust** by contacting the Secretary – Mrs Geraldine Austen on 0114 2890686 even if you have made a previous application?*

*The Trust is not means tested and was specifically designed to meet the educational needs of everyone under 25 who lives in the village or whose parents do.*

*If you think you fit the description please apply.*



# BEAUTY BANK

WELCOME TO THE BEAUTY BANK, SKIN &  
BEAUTY CLINIC.

WE OFFER A RANGE OF BESPOKE  
INDUSTRY LEADING, ADVANCED FACIAL  
TREATMENTS & MEDICAL GRADE  
PRODUCTS TO TREAT ALL THINGS SKIN.  
PLUS A FULL RANGE OF BEAUTY  
TREATMENTS.



SkinPen<sup>®</sup>  
BY CROWN AESTHETICS

Alumier<sup>®</sup>

CACI

BIO SCULPTURE

HD BROWS<sup>®</sup>  
HIGH DEFINITION BEAUTY

eVÖ

LVI<sup>®</sup>

elim  
THE SCIENTIFIC SOLUTION



0114 4498287



@banksbeautyclinic



41 Baslow Road, Totley  
Sheffield, S17 4DL

  
Scan me





# BRICKY ROW

## BARBERSHOP

WALK IN OR APPOINTMENT

BROUGHT TO YOU BY MULTI AWARD WINNING  
SAVILLS BARBERS

[www.brickyrowbarbershop.com](http://www.brickyrowbarbershop.com)

  @Brickyrow

59 Baslow Road - Trolley



# **carsave**


## **LEASING LTD**

Latest Car Leasing & Van Leasing Deals.

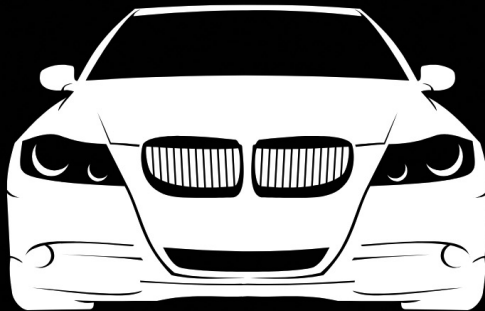
Business Lease | Personal Lease

Electric Vehicle Leasing | Hybrid Vehicle Leasing

Contact your friendly local leasing specialists for an Instant free quote

 0114 258 2888

 [sales@carsave.co.uk](mailto:sales@carsave.co.uk)



[www.carsave.co.uk](http://www.carsave.co.uk)

# UNTHANK HALL

— TRADITIONAL MEATS —

WE ARE A FAMILY RUN FARM  
PRODUCING THE BEST HOME  
GROWN, GRASS FED DEXTER  
CATTLE AND OUTDOOR  
REARED PIGS AND SHEEP

Order your meat boxes direct on our new website  
[www.unthank-meat.co.uk](http://www.unthank-meat.co.uk)



[charlotte@unthank-farm.co.uk](mailto:charlotte@unthank-farm.co.uk)

[www.unthank-meat.co.uk](http://www.unthank-meat.co.uk)





# John Heath & Sons

## Funeral Directors

An Independent Family Business For Six Generations.

Day or Night (0114) 272 22 22

Earsham Street | Ecclesall | Crookes | Stannington |  
Meadowhead | Ecclesfield | Deepcar | Penistone |  
Eckington | Hollinsend



*Pre-paid Funeral Plan Service available*  
[www.JohnHeath.co.uk](http://www.JohnHeath.co.uk)



**SELECTED**  
*Independent*  
FUNERAL HOMES®

# LEE ROWLEY MP



**I hold regular advice surgeries offering help and support to local people.**  
To arrange an appointment, please email me or call **01246 439222**

**Constituency Office**

Eckington Business Centre, 62 Market Street,  
Eckington, S21 4JH

**Westminster Office**

House of Commons, London SW1A 0AA

**t: 01246 439222**

**w: [lee4ned.com](http://lee4ned.com)**

**e: [lee.rowley.mp@parliament.uk](mailto:lee.rowley.mp@parliament.uk)**

**🐦 @Lee4NED**

**📘 [fb.com/lee4ned](https://fb.com/lee4ned)**

*Serving the people of North East Derbyshire*

## ST. SWITHIN'S CHURCH



**Main service - 10.30am Sundays.** All are welcome at services, events and activities at your local parish church.

Join our Facebook public group for the latest news and information.



### **Sunday services:**

1st & 3rd Sundays - usually Holy Communion

2nd Sunday - usually Baptism or Morning Praise

4th Sunday - usually Worship Together (great for kids!)

**Glow!** Our village youth club for Y7-Y13, every Monday (term time only), drop in 7.00-8.30pm. Contact Sarah Webb on 07929 582233 or [sarah@webbhome.co.uk](mailto:sarah@webbhome.co.uk).

**Toddlers:** every Thursday morning, 10.00-11.30am (term time only).

New families always welcome but there may be a waiting list.

Contact Chris Taylor on 0114 289 1402 or [christine.taylor42@hotmail.co.uk](mailto:christine.taylor42@hotmail.co.uk)

**J-Cafe:** Holmesfield's community cafe is open every 2nd and 4th Friday, 10.00am-1.30pm and on market days with all profits going to Hope House homeless project in Chesterfield.

**Life Events:** Do get in touch with us about *christenings, weddings, funerals* or matters relating to the *churchyard*.

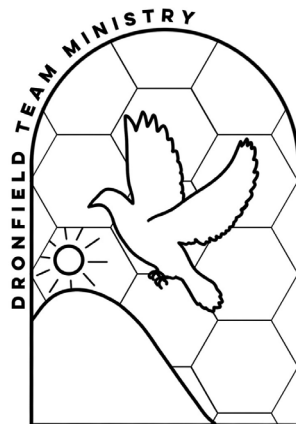
**Church Hall:** An excellent, modern, well equipped hall with kitchen and meeting room, available to hire for one-off events or regular activities.

**Contact:** For all enquiries please contact the Parish Office in the first instance or visit our website for more info.

t. 01246 412328

e: [office@dronfieldteamministry.org](mailto:office@dronfieldteamministry.org)

w: [www.dronfieldteamministry.org](http://www.dronfieldteamministry.org)



---

## COWLEY MISSION AND THE VINE FELLOWSHIP

Our service commences at 10.30am each Sunday at Cowley Mission.

Everyone is welcome to come and visit/join us.

Dates for February are as follows:

- 4th Terry Irwin (Communion)
- 11th David Goddard
- 18th Dr Bethell (Communion)
- 25th Don Brennan



**PureChiro™**

ENHANCE HEALTH **TRANSFORM LIFE**

# Chiropractic Clinic in Dronfield

**T:** 01246 412255

**E:** [reception@purechiroclinic.com](mailto:reception@purechiroclinic.com)

**[www.purechiroclinic.com](http://www.purechiroclinic.com)**

PureChiro Clinic  
3 Stubley Drive, Dronfield Woodhouse,  
Dronfield. S18 8QY

# DRONFIELD RAIL TIMETABLE



## Train Services from Dronfield

From **Sunday 10/12/2023**, until **Saturday 18/05/2024**

Destination	Op	Departs	Plat	M	T	W	T	F	S	S	Departs	Days operating	Next Station
Sheffield	NT	00:02	2		✓	✓	✓	✓	✓	✓	00:02	Not Mondays	Sheffield
Nottingham	NT	05:24	1	✓	✓	✓	✓	✓	✓		05:24	Not Sundays	Chesterfield
Nottingham	NT	06:13	1	✓	✓	✓	✓	✓	✓		06:13	Not Sundays	Chesterfield
Leeds	NT	06:32	2	✓	✓	✓	✓	✓	✓		06:32	Not Sundays	Sheffield
Nottingham	NT	06:53	1	✓	✓	✓	✓	✓	✓		06:52	Not Sundays	Chesterfield
Leeds	NT	07:00	2	✓	✓	✓	✓	✓	✓		07:00	Not Sundays	Sheffield
Nottingham	NT	07:12	1	✓	✓	✓	✓	✓	✓		07:12	Not Sundays	Chesterfield
Liverpool Lime Street	EM	07:15	2	✓	✓	✓	✓	✓	✓		07:15	Not Sundays	Sheffield
Sheffield <sup>1</sup>	EM	07:23	2	✓	✓	✓	✓	✓	✓		07:23 <sup>1</sup>	Not Sundays <sup>1</sup>	Sheffield
Leeds	NT	08:04	2	✓	✓	✓	✓	✓	✓		08:05	Not Sundays	Sheffield
Nottingham	NT	08:21	1	✓	✓	✓	✓	✓	✓		08:21	Not Sundays	Chesterfield
Liverpool Lime Street	EM	08:28	2	✓	✓	✓	✓	✓	✓		08:28	Not Sundays	Sheffield
Leeds	NT	09:03	2	✓	✓	✓	✓	✓	✓		09:02	Not Sundays	Sheffield
Nottingham	NT	09:15	1	✓	✓	✓	✓	✓	✓	✓	09:15	Every Day	Chesterfield
Leeds <sup>2</sup>	NT	10:01	2	✓	✓	✓	✓	✓	✓		10:02 <sup>2</sup>	Not Sundays <sup>2</sup>	Sheffield
Nottingham	NT	10:17	1	✓	✓	✓	✓	✓	✓		10:17	Every Day	Chesterfield
L'pool Lime Street <sup>3</sup>	EM	10:23	2							✓	10:24 <sup>3</sup>	Sundays Only	Sheffield
Leeds	NT	11:01	2	✓	✓	✓	✓	✓	✓	✓	11:02	Every Day	Sheffield
Nottingham	NT	11:16	1	✓	✓	✓	✓	✓	✓	✓	11:16	Every Day	Chesterfield
Leeds	NT	12:03	2	✓	✓	✓	✓	✓	✓	✓	12:03	Every Day	Sheffield
Nottingham	NT	12:16	1	✓	✓	✓	✓	✓	✓	✓	12:16	Every Day	Chesterfield
Leeds	NT	13:03	2	✓	✓	✓	✓	✓	✓	✓	13:03	Every Day	Sheffield
Nottingham	NT	13:16	1	✓	✓	✓	✓	✓	✓	✓	13:16	Every Day	Chesterfield
Leeds	NT	14:03	2	✓	✓	✓	✓	✓	✓	✓	14:03	Every Day	Sheffield
Nottingham	NT	14:16	1	✓	✓	✓	✓	✓	✓	✓	14:16	Every Day	Chesterfield
Leeds	NT	15:03	2	✓	✓	✓	✓	✓	✓	✓	15:03	Every Day	Sheffield
Nottingham	NT	15:16	1	✓	✓	✓	✓	✓	✓	✓	15:16	Every Day	Chesterfield
Leeds	NT	16:03	2	✓	✓	✓	✓	✓	✓	✓	16:03	Every Day	Sheffield
Nottingham	NT	16:16	1	✓	✓	✓	✓	✓	✓	✓	16:16	Every Day	Chesterfield
Norwich	EM	16:50	1	✓	✓	✓	✓	✓	✓		16:50	Not Sundays	Chesterfield
Leeds	NT	17:03	2	✓	✓	✓	✓	✓	✓	✓	17:03	Every Day	Sheffield
Nottingham	NT	17:16	1	✓	✓	✓	✓	✓	✓	✓	17:16	Every Day	Chesterfield
Norwich	EM	17:51	1	✓	✓	✓	✓	✓	✓		17:51	Not Sundays	Chesterfield
Leeds	NT	18:02	2	✓	✓	✓	✓	✓	✓		18:02	Every Day	Sheffield
Nottingham	NT	18:16	1	✓	✓	✓	✓	✓	✓	✓	18:16	Every Day	Chesterfield
Leeds	NT	19:03	2	✓	✓	✓	✓	✓	✓	✓	19:03	Every Day	Sheffield
Nottingham <sup>4</sup>	NT	19:15	1	✓	✓	✓	✓	✓	✓	✓	19:15 <sup>4</sup>	Every Day	Chesterfield
Leeds	NT	20:02	2	✓	✓	✓	✓	✓	✓	✓	20:02	Every Day	Sheffield
Nottingham	NT	20:16	1	✓	✓	✓	✓	✓	✓	✓	20:16	Every Day	Chesterfield
Leeds	NT	21:02	2	✓	✓	✓	✓	✓	✓	✓	21:02	Every Day	Sheffield
Nottingham	NT	21:14	1	✓	✓	✓	✓	✓	✓	✓	21:14	Every Day	Chesterfield
Nottingham	EM	21:50	1	✓	✓	✓	✓	✓	✓	✓	21:49	Every Day	Chesterfield
Leeds	NT	22:02	2	✓	✓	✓	✓	✓	✓		22:02	Not Sundays	Sheffield
Nottingham	NT	22:15	1	✓	✓	✓	✓	✓	✓		22:15	Every Day	Chesterfield
Leeds	NT	22:23	2							✓	22:23	Sundays Only	Sheffield
Nottingham	NT	22:52	1							✓	22:52	Sundays Only	Chesterfield
Sheffield	NT	23:23	2							✓	23:23	Sundays Only	Sheffield
Destination	Op	Departs	Plat	M	T	W	T	F	S	S	Departs	Days operating	Next Station

### NOTES

© Friends of Dronfield Station, 2023

1. Service not shown on Northern Railways timetable 33
  2. Service doesn't run any more from Dronfield on Sundays. Starts from Sheffield at 10:17 and goes all the way to Carlisle (Arr 13:42)
  3. Service arrives Liverpool Lime Street 12:29
  4. Service originates Leeds Mo-Sa but on Sundays starts from Carlisle at 15:20
- All times and services copied from Network Rail 4<sup>th</sup> October, 2023
  - Maybe subject to variation – Please check before travelling
  - Where a service varies by only a few minutes between weekdays, Saturdays and/or Sundays, the earliest departure time is shown





## Local Online Sweets Business

We have all  
your favourite  
Pick'n'mix  
sweets!



@HouseofsweetsUK

DM us with your orders  
FREE local delivery to  
Holmesfield, Barlow and Millthorpe!

**M** Millhouses

**P** Plumbing &

**H** Heating

**S** Services

Central Heating

Bathrooms

Tiling

Boiler installation and Servicing

Renewables – Ground Source/Air Source/Solar

Keith Butcher – 07887 850588 / 0114 2891817





# HOLMESFIELD BUS TIMETABLE

## CHESTERFIELD – BARLOW – HOLMESFIELD – DRONFIELD

• Broomfield • Chesterfield Town Centre • Crowhole • Holmesfield • Dronfield

16

### MONDAY TO FRIDAY

Broomfield Linden Drive	06:34	-	07:27	09:52	10:41	11:50	12:50	13:49	-	15:55	17:00	-
Hasland The Green Nursing Home	06:37	-	07:31	09:56	10:45	11:54	12:54	13:53	-	16:00	17:05	-
Hasland Medical Centre	06:41	-	07:35	10:00	10:49	11:58	12:58	13:57	-	16:04	17:09	-
Birdholme Mellor Way	06:44	-	07:38	10:03	10:52	12:01	13:01	14:00	-	16:08	17:13	-
Chesterfield New Beetwell Street stop B1	06:52	07:32	07:47	10:12	11:01	12:10	13:10	14:09	14:51	16:18	17:23	18:02
Chesterfield Knifesmithgate stop L2	06:55	07:35	07:51	10:16	11:06	12:15	13:15	14:14	14:56	16:23	17:28	18:06
Newbold Nags Head	07:00	07:41	07:59	10:22	11:12	12:21	13:21	14:20	15:03	16:31	17:36	18:13
Upper Newbold Four Lane Ends	07:03	07:44	08:03	10:26	11:16	12:25	13:25	14:24	15:07	16:35	17:40	18:16
Cutthorpe Barber Lane			08:07		11:20			14:28		16:39	17:44	18:20
Crowhole Commonsides Road	07:08	07:57	08:16	10:31	11:29	12:30	13:30	14:37	15:12	16:47	17:52	18:28
Milthorpe New Road	07:11	08:00	08:19	10:34	11:32	12:33	13:33	14:40	15:15	16:50	17:55	18:31
Holmesfield Cartledge Lane Garage	07:16	08:05	08:24	10:39	11:37	12:38	13:38	14:45	15:20	16:55	18:00	18:36
Dronfield Woodhouse Gardom Close		08:14		10:44		12:43	13:43					18:41
Dronfield Civic Centre	07:23	08:18	08:31	10:48	11:43	12:47	13:47	14:52	15:28	17:03	18:07	18:45

School holidays only.

Continues to Henry Fanshawe School on school days, arriving at 08:40.

School holidays only.

### SATURDAY

Broomfield Linden Drive	06:34	-	07:27	09:52	10:41	11:50	12:50	13:49	-	15:55	17:00	-
Hasland The Green Nursing Home	06:38	-	07:31	09:56	10:45	11:54	12:54	13:53	-	15:59	17:04	-
Hasland Medical Centre	06:41	-	07:34	09:59	10:48	11:57	12:57	13:56	-	16:02	17:07	-
Birdholme Mellor Way	06:43	-	07:36	10:01	10:51	12:00	13:00	13:59	-	16:05	17:09	-
Chesterfield New Beetwell Street stop B1	06:52	07:32	07:45	10:10	11:00	12:09	13:09	14:08	14:51	16:14	17:18	18:02
Chesterfield Knifesmithgate stop L2	06:55	07:35	07:49	10:15	11:05	12:14	13:14	14:13	14:56	16:19	17:23	18:06
Newbold Nags Head	07:00	07:40	07:55	10:22	11:12	12:20	13:20	14:19	15:02	16:25	17:29	18:12
Upper Newbold Four Lane Ends	07:03	07:43	07:59	10:26	11:16	12:25	13:25	14:23	15:06	16:29	17:32	18:15
Cutthorpe Barber Lane			08:03		11:20			14:27		16:33	17:36	18:19
Crowhole Commonsides Road	07:07	07:57	08:12	10:31	11:29	12:30	13:30	14:36	15:11	16:42	17:44	18:26
Milthorpe New Road	07:10	08:00	08:15	10:34	11:32	12:33	13:33	14:39	15:14	16:45	17:47	18:29
Holmesfield Cartledge Lane Garage	07:14	08:05	08:20	10:39	11:37	12:38	13:38	14:44	15:19	16:50	17:52	18:33
Dronfield Woodhouse Gardom Close		08:11		10:45		12:44	13:44					18:37
Dronfield Civic Centre	07:20	08:15	08:26	10:49	11:43	12:48	13:48	14:50	15:26	16:56	17:58	18:41

from 29 October 2023 **No Sunday service**



You might not need to print this, for up to the minute information why not [download the Stagecoach Bus App](#)



**Live travel updates:** The Stagecoach bus app shows live departures for your nearest bus stop and you can track the progress of your bus on a map. Service updates are available by following @StagecoachYrks on Twitter and any planned service changes are normally posted online at [stagecoachbus.com](http://stagecoachbus.com).

# Holmfirth Vineyard and Restaurant

WOODHOUSE LANE, HOLMFIRTH. HD9 2QR



**Contact: Ian Wilkinson**

Office: 0114 289 1847 Mobile: 0795 805 4402

Email: [weathervanebuild@gmail.com](mailto:weathervanebuild@gmail.com)

[www.weathervanesteelbuildings.co.uk](http://www.weathervanesteelbuildings.co.uk)

# HOLMESFIELD BUS TIMETABLE

## DRONFIELD – HOLMESFIELD – BARLOW – CHESTERFIELD

• Dronfield • Holmesfield • Crowhole • Chesterfield Town Centre • Broomfield

# 16

### MONDAY TO FRIDAY

Dronfield Civic Centre	-	-	08:49	09:36	10:53	11:48	12:52	13:52	14:57	15:50	17:08	18:13		
Dronfield Woodhouse Gardom Close	-	06:46	08:54	09:41	10:58	▼	12:56	▼	15:01	15:51	17:12	▼		
Holmesfield Cartledge Lane Garage	-	06:52	08:58	09:47	11:04	11:56	13:01	14:00	15:05	15:06	16:00	17:18	18:21	
Millthorpe Village	-	06:56	09:02	09:51	11:08	12:00	13:05	14:04	-	15:10	16:04	17:22	18:25	
Crowhole Commonside Road	-	06:59	09:05	09:54	11:11	12:03	13:08	14:07	-	15:13	16:07	17:25	18:28	
Cutthorpe Barber Lane	-	07:08	09:14	10:03	▼	12:12	▼	14:16	-	15:22	16:16	▼	▼	
Upper Newbold Four Lane Ends	-	07:12	09:18	10:07	11:16	12:16	13:13	14:20	-	15:18	16:20	17:30	18:33	
Newbold Nags Head	-	07:15	09:22	10:11	11:20	12:20	13:17	14:24	-	15:22	16:24	17:34	18:36	
Chesterfield Stephenson Place stop K3	🔒	-	07:23	09:30	10:19	11:28	12:28	13:25	14:31	-	15:30	16:32	17:41	18:43
Chesterfield New Beetwell Street stop B12	🚰	07:09	07:27	09:34	10:23	11:32	12:32	13:29	14:35	-	15:34	16:36	17:45	-
Birdholme Mellor Way		07:15	-	09:40	10:29	11:38	12:38	13:36	-	-	15:42	16:44	17:52	-
Hasland Medical Centre	🏥	07:18	-	09:43	10:32	11:41	12:41	13:39	-	-	15:45	16:47	17:55	-
Hasland The Green Nursing Home		07:21	-	09:46	10:35	11:44	12:44	13:43	-	-	15:48	16:50	17:58	-
Broomfield Linden Drive		07:25	-	09:50	10:39	11:48	12:48	13:47	-	-	15:53	16:55	18:02	-

School days only. Finishes at Holmesfield Cowley Lane not Cartledge Lane Garage

Starts from Henry Fanshawe School on school days, at 15:40.

School holidays only.

### SATURDAY

Dronfield Civic Centre	-	-	08:49	09:36	10:53	11:47	12:52	13:52	14:57	15:50	17:08	18:13	
Dronfield Woodhouse Gardom Close	-	06:46	08:54	09:41	10:58	▼	12:56	▼	15:01	15:54	17:12	▼	
Holmesfield Cartledge Lane Garage	-	06:50	08:58	09:46	11:03	11:55	13:02	14:02	15:07	16:00	17:18	18:20	
Millthorpe Village	-	06:54	09:02	09:50	11:07	11:59	13:06	14:06	15:11	16:04	17:22	18:24	
Crowhole Commonside Road	-	06:57	09:05	09:53	11:10	12:02	13:09	14:09	15:14	16:07	17:25	18:27	
Cutthorpe Barber Lane	-	07:06	09:14	10:02	▼	12:11	▼	14:18	▼	15:22	16:16	▼	
Upper Newbold Four Lane Ends	-	07:10	09:18	10:07	11:15	12:15	13:14	14:22	15:19	16:21	17:30	18:31	
Newbold Nags Head	-	07:13	09:22	10:11	11:19	12:19	13:17	14:25	15:22	16:24	17:34	18:34	
Chesterfield Stephenson Place stop K3	🔒	-	07:20	09:29	10:19	11:27	12:27	13:25	14:33	15:30	16:32	17:41	18:40
Chesterfield New Beetwell Street stop B12	🚰	07:09	07:24	09:33	10:23	11:31	12:32	13:30	14:38	15:35	16:37	17:45	-
Birdholme Mellor Way		07:15	-	09:39	10:29	11:37	12:38	13:36	-	15:41	16:43	17:52	-
Hasland Medical Centre	🏥	07:18	-	09:42	10:32	11:40	12:41	13:39	-	15:44	16:46	17:55	-
Hasland The Green Nursing Home		07:21	-	09:45	10:35	11:43	12:44	13:42	-	15:47	16:49	17:58	-
Broomfield Linden Drive		07:25	-	09:49	10:39	11:47	12:48	13:46	-	15:51	16:53	18:02	-

from 29 October 2023 **No Sunday service**



You might not need to print this, for up to the minute information why not [download the Stagecoach Bus App](#)



**Live travel updates:** The Stagecoach bus app shows live departures for your nearest bus stop and you can track the progress of your bus on a map. Service updates are available by following @StagecoachYrks on Twitter and any planned service changes are normally posted online at [stagecoachbus.com](http://stagecoachbus.com).

# THE RUTLAND ARMS HOLMESFIELD

---

**Step inside to discover a traditional pub of unique character, revered for its eclectic range of real ales, which are served, as they should be, with a generous measure of British hospitality.**

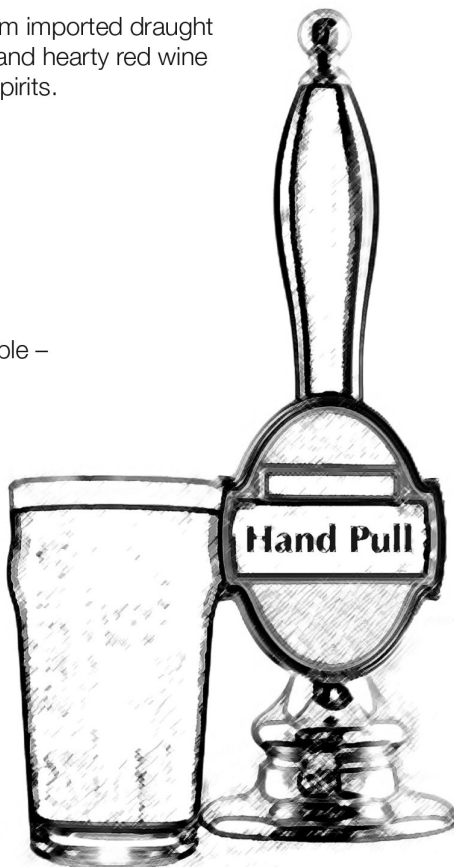
We also provide a varied drink selection from imported draught and bottled Lagers, Guinness, strong ales and hearty red wine along with a great choice of whiskies and spirits.

- 6 traditional hand pulls – superb guest beers/ciders changing weekly
- Casque Marque accredited
- Finest Cask accredited
- CAMRA Multi-award winning pub
- Dogs welcome all year round
- Range of sandwiches and snacks available – Mon, Tue, Thu, Fri and Sat 12-2
- Large beer garden
- Quiz night – Mondays from 9pm
- Open daily – 12.00-11.30pm



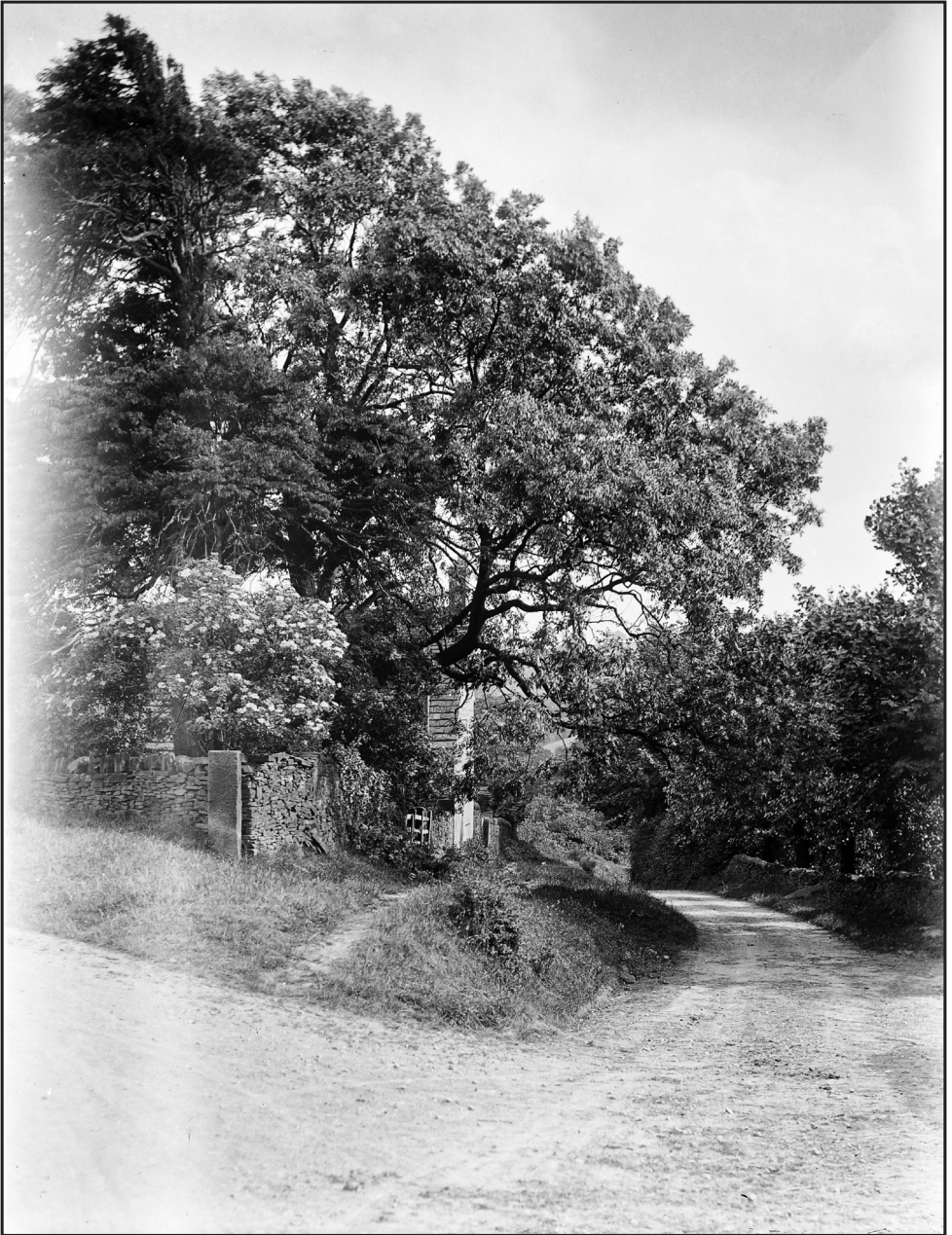
**CAMPAIGN  
FOR  
REAL ALE**

**The Rutland Arms  
Cowley Bar, Holmesfield**  
Call: 01142 890374





# HOLMESFIELD BYGONES



This month's photograph from the lens of W. "Harry" Hewitt of Dronfield is the junction of New Road (to Barlow) on the left and Mill Lane in front of the photographer c.1910 with the famous ford out of site beyond.



# Holmesfield Village Hall

## Available to Hire for Meetings and Functions

Lucy Perry - Lettings Officer. Tel: 0775 2478866  
email: [holmesfieldvillagehall@outlook.com](mailto:holmesfieldvillagehall@outlook.com)



*Main Hall*



*Small Hall*



*Committee Room*



*Kitchen*